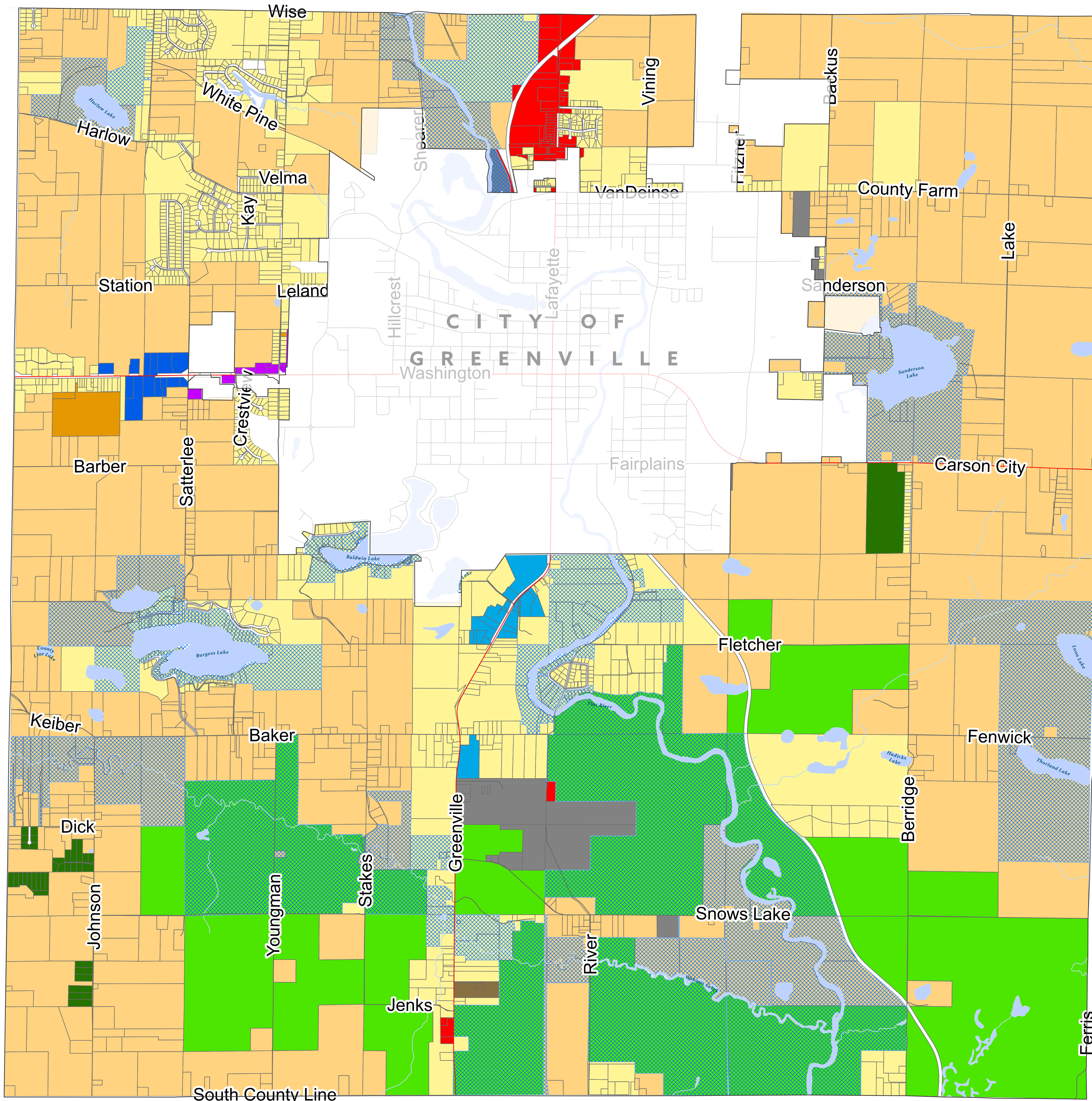


Eureka Charter Township

Montcalm County, Michigan

Zoning Map

Adopted: May 9, 2022
Effective: May 23, 2022
(As amended through September 2025)



Legend

- Open Water
- AG, Agricultural
- RR, Rural Residential
- SR, Suburban Residential
- UR, Urban Residential
- MHR, Manufactured Home Park Residential
- PC, Public Conservation
- RC, Rural Commercial
- OSC-1, Office Service Commercial - 1
- OSC-2, Office Service Commercial - 2
- GC, General Commercial
- IND, Industrial
- Waterfront Overlay

williams&works
engineers | surveyors | planners

0 2,000 4,000 8,000 Feet

